



4, Rea Bridge, Coleham Head, Shrewsbury, SY3 7BW
£2,250 Per Month



4, Rea Bridge, Coleham Head, Shrewsbury, SY3 7BW

£2,250 Per Month

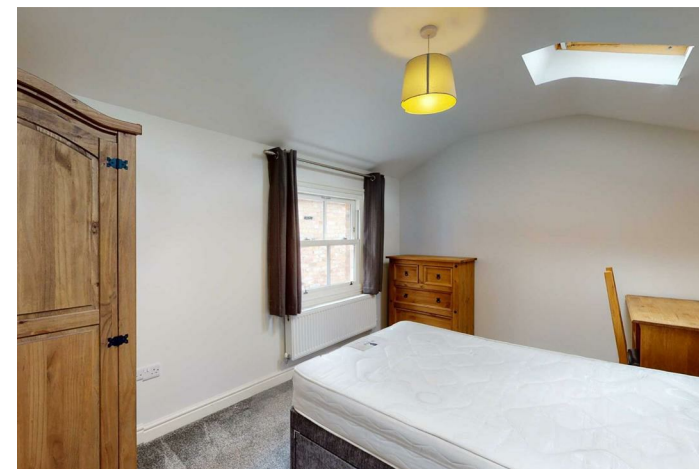
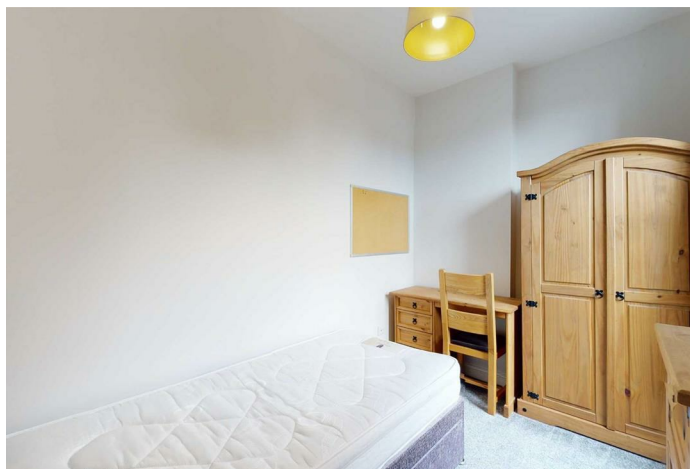
VIRTUAL TOUR AVAILABLE: Spacious FURNISHED five bedroom townhouse walking distance from Shrewsbury town centre and close to a range of useful amenities. Includes garaged parking and courtyard garden. Suitable for groups of sharers or families. Available long term if required.

*Sofa included in living area.

Available: Immediately

Description

Comprising: Entrance lobby, cloakroom including WC, large open plan kitchen / dining / living room, utility cupboard including washing machine. Stairs to first floor landing, four bedrooms, family bathroom including shower, stairs to second floor, large double bedroom with views of the River Severn and ensuite shower room. Integrated garaged parking, private courtyard garden. Gas central heating, double glazing. EPC C



Furnished

Council Tax Band: C

Available: 12th January 2026

EPC: C

Floor Plans



These particulars, whilst believed to be accurate are set out as a general outline only for guidance and do not constitute any part of an offer or contract. Intending purchasers should not rely on them as statements of representation of fact, but must satisfy themselves by inspection or otherwise as to their accuracy. No person in this firms employment has the authority to make or give any representation or warranty in respect of the property.